

*i-to-i*

TEFL  
**INTERNSHIP**

---

CHINA



**sta** TRAVEL

DISCOVER CHINA.

TEACH ENGLISH.

*start an adventure!*



# CONTENTS

To your next destination »



**p.02**  
TEACH ENGLISH  
IN CHINA



**p.04**  
WHAT'S  
INCLUDED?



**p.08**  
THE TEFL  
COURSE



**p.12**  
WHERE WILL I  
BE PLACED?



**p.14**  
ORIENTATION



**p.16**  
A DAY IN THE LIFE  
OF A CHINA TEFL  
TEACHER



**p.18**  
AILEEN'S CHINA  
STORY



**p.10**  
WHAT'S MY  
ROLE?



**p.20**  
WHAT'S THE  
COST?



**p.22**  
FREQUENTLY  
ASKED QUESTIONS



# TEACH ENGLISH IN CHINA

**N**i hǎo! ...and welcome to your next adventure. If the idea of living and teaching abroad in a wonderfully diverse culture appeals to the adventurer in you, our [China TEFL Internship](#) is the perfect way to get started! Spend an incredible 5 months exploring China, immersing yourself in the eastern way of life, exploring world-famous heritage sites and sampling the local culinary delights – all while getting real teaching experience.

During your internship, you'll earn a good living allowance which is yours to spend as you wish. With clean, comfortable accommodation included, you won't have any of the hassle and cost of arranging it yourself. Plus, with visa assistance, airport transfers, ongoing in-country support and a brilliant orientation week, you'll have everything taken care of for you, leaving you free to focus on the fun bits!

## BACK TO BASICS! WHAT IS TEFL?

TEFL just means Teaching English as a Foreign Language! If you've been dreaming of earning money while you travel, making unforgettable memories and learning a sparkly new skill, TEFL is pretty much perfect for you!

Our qualifications, accreditations and friends:



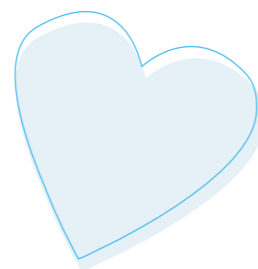
# WHAT'S INCLUDED?

**5 months'**  
practical teaching  
experience

**Airport pick-  
ups** & transfers

**120 hours**  
online TEFL  
training

**2000RMB**  
(£200/US\$260)  
monthly living  
allowance



**COMPLETION  
BONUS**  
of 2500RMB  
(£250/US\$320)

**ACADEMIC**  
& in-country  
support

**A**CCOMMODATION  
(with bills up  
to 150RMB)

Orientation in  
**BEIJING**



**B**efore you hop onto that plane, we'll make sure you're fully prepared with our English Government-regulated 120 Hour Online TEFL Course. You'll benefit from unrivalled tutor support throughout your course and upon completion, your shiny new certificate will be recognised internationally. So, if you fancy continuing your TEFL career elsewhere, you'll be covered!

You'll also benefit from full support before and during your internship through our dedicated Customer Support Team and

our trusty in-country partners. We can assist you with your internship application, give guidance on visas, provide help and support with any personal matters throughout your stay and answer any queries or concerns you might have in the run-up to your trip.

Our support doesn't end when the Internship's over. Although it's not something you want to think about now, you may want to come back home! We'll be there post-internship to offer job guidance, or further travel opportunities...



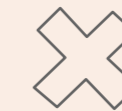
WHAT DO I NEED?



- To be a fluent English speaker
- To hold a passport from the UK, Ireland, USA, Canada, Australia or New Zealand
- To be aged between 18-45
- To have completed high school / secondary school
- A clean police check



WHAT YOU DON'T NEED:



- Prior teaching experience
- A university degree
- A second language

---

# THE TEFL Course

Before you swap your boots for flip-flops, you'll need to complete your 120 Hour Online TEFL Course which is included in your TEFL Internship package.

---

This typically takes between 4-6 weeks so make sure you give yourself a good amount of time to complete it. With videos, quizzes and interactive activities it should be fun and informative, giving you total confidence to teach English when you arrive in China.

## THE TEFL TRAINING IN A NUTSHELL:

- Essential 120 Hour Online TEFL Course
- Flexible studying 24/7
- Study online on your tablet, computer or phone
- Access to unrivalled tutor support throughout
- English Government regulated qualification
- Recognised by employers across the world



[CHECK OUT OUR TEFL COURSES TO READ MORE >>](#)



## WHAT'S MY ROLE?

Get ready to put your TEFL training into action! You'll be teaching a classroom of 25-50 students but don't worry, with our comprehensive TEFL training, you'll feel confident and fully prepared - and you'll be getting into the swing of things in no time!

Your role as a TEFL teacher consists of:

- Teaching the school children engaging English lessons
- Creating lesson plans, resources and grading
- Conversing with the schoolchildren in English
- 15 classroom hours per week
- 20 hours for lesson planning etc. per week
- Inspiring your students and having fun in the classroom!

## Let's talk money!

You'll be earning a small living allowance of 2000RMB (approx. £200 / US\$260) per month

**BONUS:** Once you complete your placement, you'll also get a 2500RMB (£250 / US\$320) completion bonus to say a big thank you! Perfect for boosting your future travels fund!



# WHERE MIGHT I BE PLACED?

Our interns can be placed in a range of locations across China. It's possible to request a specific location from the list but we can't guarantee that you'll be placed

there. The earlier you apply, the better the chance that you'll be placed in your chosen location.



## Beijing

China's capital is home to upwards of 21.5 million citizens as well as boasting spectacular modern architecture, a multitude of historical sites and of course, Peking duck!

## Sichuan

Steeped in history with numerous museums, Sichuan province's capital Chengdu is also the place for animal lovers out there - the Giant Panda research centre's based here!

## Zhejiang

Famed for its natural beauty, Zhejiang province is home to China's biggest city - Shanghai! You'll find amazing views of the light-show from The Bund, temples, museums and some of the tallest sky-scrapers around!

## Hunan

Located in southern central China, the province of Hunan boasts Zhangjiajie National Forest Park where you can view the majestic mountains from cable cars!

## Jiangsu

Jiangsu province boasts a multitude of amazing sites worth seeing. Including the Giant Buddha at Ling Shan, Suzhou's elaborate array of gardens and the ancient Lake Tai.

## Guangdong

This province is the birthplace of delicious Cantonese food! Built on the Pearl River, its capital Guangzhou has a 2,200 year history, mixing ancient traditions with a super modern skyline.

## Liaoning

In the north of China, Liaoning borders the Yellow Sea and its capital city, Shenyang, is the historical home of Mukden Palace from the Manchu Qing dynasty.

# ORIENTATION

Touch-down in Beijing!

北京市



1

When you get off the plane in Beijing, our in-country partners will be there to meet you and take you back to meet the rest of the team at the hotel.



2

From there, you'll spend 4 days exploring the sights and sounds of bustling Beijing (after some much-needed rest, of course!). Delve into the culture with a tour to the Great Wall, a calligraphy class and a delicious welcome meal where you can sample a taste of the local cuisine.

3

You'll also get the opportunity to try your hand at Tai Chi and even some basic Mandarin lessons. Grab the opportunity to get chatting to your fellow interns and make friends – you might make a travel-buddy out of it! At the end of your orientation week, the team will take you to your next destination which is where you'll be calling home for the next 5 months!



# A DAY IN THE LIFE OF A CHINA TEFL TEACHER



7:30 AM

Breakfast time! Feel free to embrace the culture and enjoy some Chinese rice-porridge, steamed buns or rice noodles. Yum!



8:30 AM

School starts and welcome to your first lesson of the day. Get ready to put your TEFL training into practice!



12:00PM

Lunch time! Chow down on delicious wontons, classic chow mein or sweet and sour dishes.



2:00 PM

Time to plan next week's lessons, create resources and attend meetings. Or, if you had one too many Tsingtao's the night before, you could take a nap on the office beds!



4:30 PM

School's out! Time to enjoy your free time however you fancy. Maybe Skype your friends or have a wander around your local city-centre, there's plenty to see!



6:30 PM

Meet up with your fellow interns to swap stories about your day or join your other teachers for an authentic Chinese meal.



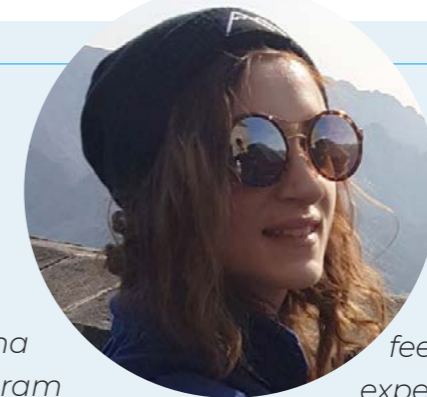
8:00 PM

If it's the weekend then head down to a karaoke bar to do your best Beyonce rendition! Or if you're heading away for the weekend, get an early night so you're ready to explore!



# TEFL CASE STUDY: *Aileen*

NOW YOU'VE HEARD IT FROM US, HEAR IT FROM OUR INTERNS! AILEEN TOOK PART IN THE TEFL COURSE & INTERNSHIP AND SHE'S LOVED EVERY MINUTE. THIS IS WHAT SHE HAD TO SAY...

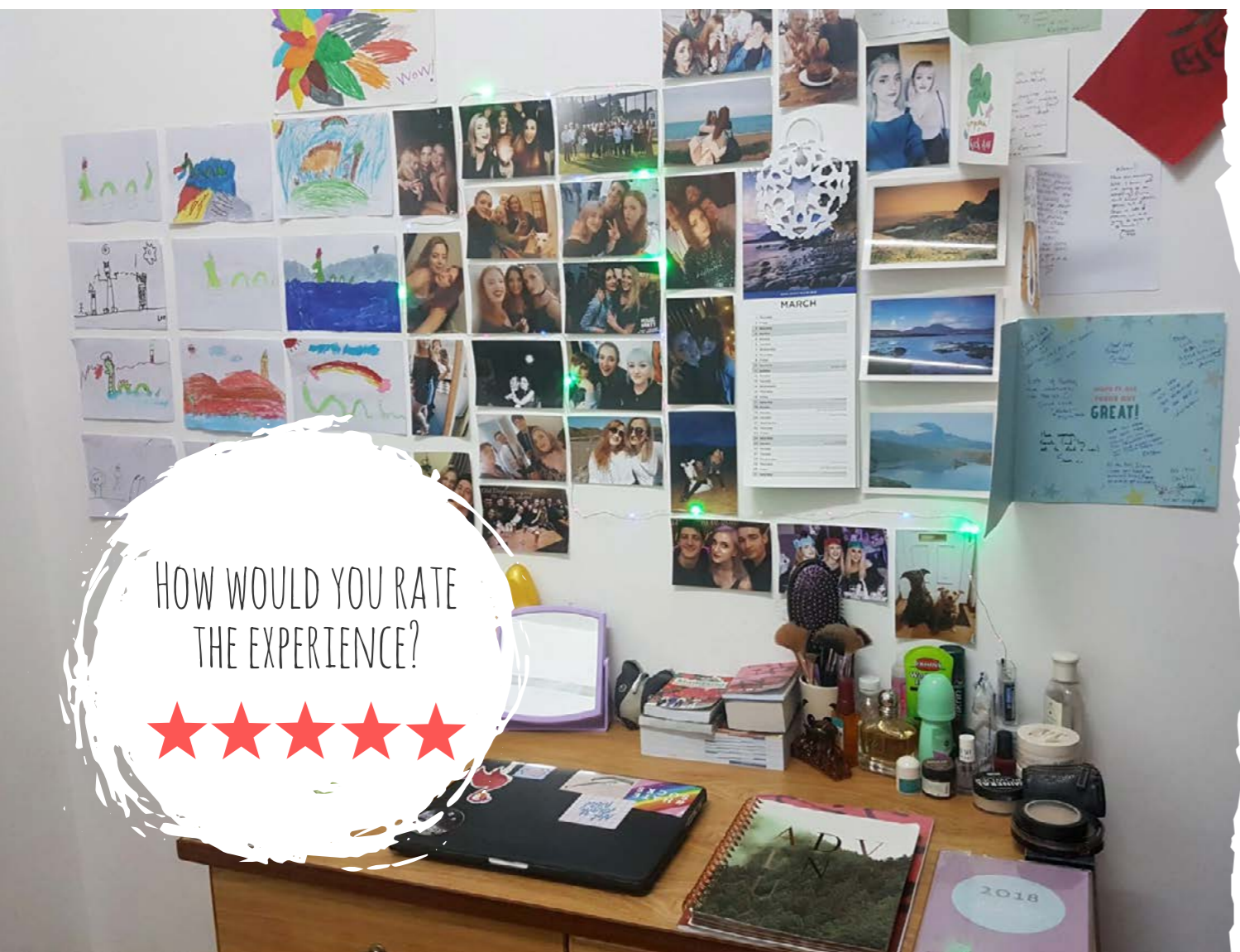


*I chose the China internship program because I thought it was the perfect way for me to find my feet as a new teacher. The online course supplied me with the theoretical knowledge and materials to start me off and now, I definitely*

*feel very fortunate to have this experience under my belt. The town where I've been placed, the school and the people have all made my internship incredible so far and I am excited to see what the rest of my time in China has in store for me*

Aileen McAlister, UK

HOW WOULD YOU RATE THE EXPERIENCE?



# WHAT'S THE COST?

£995 (SUBJECT TO OFFER)

## This covers:

- Your 120 Hour Online TEFL Course
- Monthly spending allowance of 2000RMB (£200 / US\$260)
- End of contract bonus of 2500RMB (£250 / US\$320) – teachers often use this to help fund a trip around Southeast Asia!
- Access to consistent support from your booking date until the end of your trip
- Placement in a suitable school
- 4-day orientation, mandarin lessons and tour of the Great Wall
- Clean, comfortable accommodation
- Assistance with visas/applications
- Transfers to and from Beijing airport
- Transfers to and from your placement

## Other costs

### FLIGHTS & TRAVEL INSURANCE:

- Prices vary on both – we recommend checking out Skyscanner for a bargain flight!

### VISAS & VISA ADMINISTRATION FEES:

- £190 / US\$270 for your visa and £150 / US\$200 for the visa administration fee

### POLICE CHECK:

- For UK applicants, you'll need a basic check certificate which costs approx. £25. For all other countries, please check with your local police dept.

### BUDGET:

- Approximately £20-£40 / US\$30 – US\$55 per week



### EVERYDAY ESSENTIALS

Weekly food shop (based on a Chinese food shop, Western food will cost more!) - 150RMB (£17 / \$21)

20km metro journey in Beijing - 5RMB (£0.50 / \$0.70)

Drinks and dim sum for two with a view at Tian Bar, on the 99th floor of the Four Seasons Hotel, Guangzhou - 150RMB (£17 / \$21)

# FREQUENTLY ASKED Questions

## Q: HOW MANY STUDENTS WILL THERE BE IN MY CLASS?

You'll probably be teaching a class of around 20-50 students, depending on which age group you're placed with. In general, the younger the students, the smaller the class.

## Q: WILL I HAVE ANY SPARE TIME TO EXPLORE DURING THE INTERNSHIP?

Of course! You'll have plenty of time to travel and get to know China in between your scheduled work days. Plus, there are two main public holidays which are each a week long so you can make the most of these by exploring with your fellow interns!

## Q: HOW MANY HOURS WILL I BE TEACHING EACH WEEK?

You'll be in school for 35 hours a week and roughly 15 of these will be spent teaching in the classroom. The rest of your time, you can use to prepare lessons, create resources, attend school meetings and take part in fun activities with your students.

## Q: CAN I BE PLACED WITH A FRIEND?

If you let us know that you'd like to be placed with someone while you're booking on, we'll let our partners know and they'll do their best to place you both together. However, we can't guarantee this and we'd recommend booking ASAP to give yourselves the best chance of being placed together.

## Q: WHAT AGE STUDENTS WILL I BE TEACHING?

This all depends on what type of institution you're placed in. For example, if you're placed in a public school, your students will be aged between 3-16. Otherwise, you could be placed in a training centre where students could be anything from young children to adult age.

## Q: CAN I GET A DISCOUNT IF I'VE ALREADY TAKEN A TEFL COURSE?

Good news! If you're already TEFL qualified, give our TEFL experts a call on +44 (0) 113 205 4610 and we can arrange a discount for you.

## Q: DO INTERNS HAVE A POINT OF CONTACT AT THE SCHOOL?

Yes. We've made sure that at each of our placement schools, there'll be an English-speaking member of staff to help our interns settle in.

## Q: WHAT KIND OF SCHOOL WILL I BE PLACED IN?

Just like in western society, there's a variety of different types of schools in China including private and government-run. Normally, they're large with 2,000-5,000 students, open weekdays and generally quite well-equipped with resources. Don't worry though, your TEFL training will prepare you with how to deal with limited resources and differing class sizes.



# HAPPY TEFLING!



*i-to-i*

